



Maths Week/ Wiki Pāngarau 2025



Survivor Series/Kia Mōrehurehu

Day 4 Set A: Parts 1, 2 and 3

For students

WHAT TO DO FOR STUDENTS

- 1 You can work with one or two others. Teams can be different each day.
- 2 Do the tasks and write any working you did, along with your answers, in your maths book.
- 3 Your teacher will tell you how you can get the answers to the questions and/or have your work checked.
- 4 When you have finished each day, your teacher will give you a word or words from a proverb. You could ask your teacher to explain what a proverb is.
- 5 At the end of the week, put the words together in the right order and you will be able to find the complete proverb! Your teacher may ask you to explain what the proverb means.
- 6 Good luck.



SET A PART 1 - BUTTERFLY STATISTICS

Task 1

You will be using one of the six data cards with the name and picture of a butterfly.

This is an example of a data card you will be using.



- a) Use the butterfly data card given to you and your buddy and talk together about what you see and notice.
- b) When asked, share with your teacher and classmates what your buddy said about the butterfly data card.
- c) Look at your butterfly and answer this survey question:
1. What is the main colour on your butterfly?
- d) As a class you will then move and put your data card into a group with the same main colour.
- e) Watch how your teacher organises and labels the different groups.

f) Draw a picture of your butterfly and write which main colour group it belongs to below.

Answer

Task 2

Using the same data card, repeat the activity with the next question

a) Look at your butterfly and answer this survey question:

Do these butterflies have dots on their wings?

b) With your classmates, you will then move and organise your data cards into groups.

c) Watch how your teacher organises and labels the different groups.

d) Draw a picture of your butterfly and which group it belongs to below (yes has dots or no dots).

Answer




SET A PART 2 - BUTTERFLY STATISTICS

Task 1

You will be using one of 12 data cards with the name, picture and two variables. You will use these to answer questions with a buddy.

This is an example of the data card you will be using:

1. Monarch

Main colour:
Dots: Yes or No (Circle)

- Use the butterfly data card given to you and your buddy and talk together about what you see and notice.
- When asked, share with your teacher and classmates what your buddy said about the butterfly data card.
- Fill in the data for the two variables given on your data card (see the example below)
 - What are the main colours of these NZ butterflies?
 - Do these butterflies have dots on their wings? (Dots - yes or no (circle))

1. Cabbage White



Main colour: **White**

Dots: ☒ Yes or No (Circle)

d) The word 'variable' was used in c. What are the variables for your butterfly? Write or draw them below.

Answer

Task 2

a) Look at your butterfly and answer this survey question:

1. What is the main colour on your butterfly?

b) As a class you will then move and put your data card into a group with the same main colour.

c) Watch how your teacher organises and labels the different groups.

d) Draw a picture of your butterfly and which group it belongs to below.

Answer

Task 3

Using the same data card repeat this activity with the next variable (question).

a) Look at your butterfly and answer this survey question:

2. Does your butterfly have dots on the wings?

b) With your classmates, you will then move and organise your data into groups.

c) Watch how your teacher organises and labels the different groups.

d) Draw a picture of your butterfly and which group it belongs to below.

Answer




SET A PART 3 - BUTTERFLY STATISTICS

Task 1

You will be using one of the 12 data cards with the name and picture, and two variables you will need to find by answering a survey question and finding two additional variables which will be provided.

Here is an example of a data card you will be using:

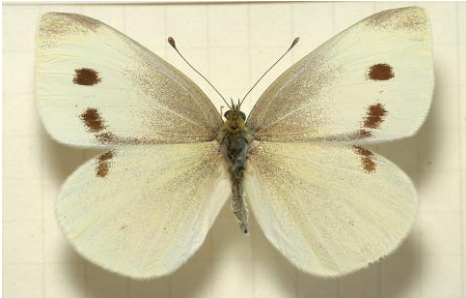
1. Monarch

Main colour:
Dots: Yes or No (Circle)
Wingspan: 100 mm
Caterpillar colour: Yellow/black/white strips

- Use the butterfly data card given to you and your buddy and talk together about what you see and notice.
- When asked, share with your teacher and classmates what your buddy said about the butterfly data card.
- By answering the two survey questions below, fill in the missing variable data on your data card (see the example below)

1. What is the main colour on your butterfly? (Main colour)

2. Does your butterfly have dots on their wings? (Dots - yes or no (circle))

2. Cabbage White



Main colour: **White**

Dots: **Yes** or No (Circle)

Wingspan: 50 mm

Caterpillar colour: Green

d) What two additional variables have been given? Write or draw them below.

Answer

Task 2

a) Look at your data card and answer this investigative question:

1. What is the colour of the caterpillar?

b) As a class you will then move and put your data card into a group with the same colour.

c) Watch how your teacher organises and labels the different groups.

d) Draw a picture of your butterfly and which group it belongs to below.

Answer

Task 3

Using the same data card, repeat this activity with a new investigative question

a) Look at your card and answer this investigative question:

What is the wingspan of NZ butterflies?

b) With your classmates, you will then move and organise your data into groups.

c) Watch how your teacher organises and labels the different groups.

d) Draw a picture of your butterfly and which group it belongs to below.

Answer

Task 4

a) Write two different investigative questions you and your buddy could ask the class about NZ butterflies? (Remember they need to use the data cards to find the answers.)

Answer